

TWITTER

ASSIGNMENT GUIDE AND CRITERIA

You will be using Twitter in this course to make a connection between the readings in your textbook, your class experiences, and Web 2.0 tools. You will be prompted during class to ‘tweet,’ the term used for creating a post.

An acceptable post for credit for the ‘in-class Tweet’ requirement must have the following:

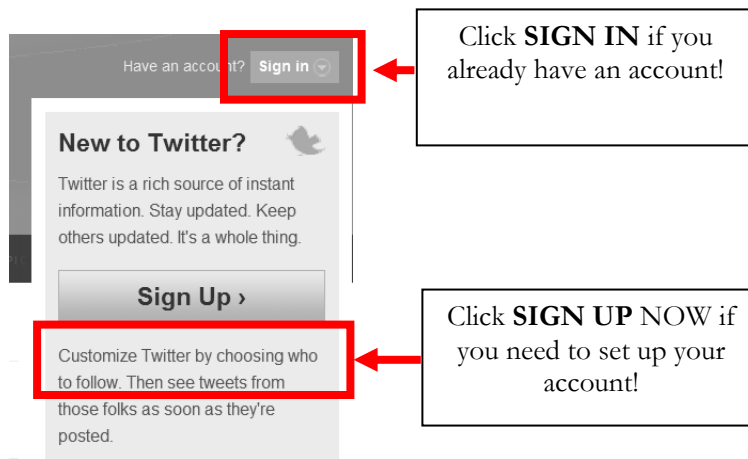
- 1) Your tweet should start with ‘#yourteamname’ given to you by your professor and
- 2) A statement that describes what you are thinking that relates something you read in the text to classwork OR something that you are doing during classwork that tweaks your thinking (☺)—all in 140 characters (not words, **characters!!** ☺)

Feel free to contribute other tweets, but only tweets that meet the criteria above will be counted for credit. Over the class sessions, you should post a minimum of 10 tweets that meet these criteria. You will be given opportunities to do this in class and through activities (such as the Virtual Field Trip), but if you feel that you prefer to do this outside of class, that is acceptable as well.

Please note: The Twitter site updates their tool constantly, and the screens you use see today may be slightly different than when the following quicksteps were created. If you have any questions do not hesitate to ask. Last updated: December 2, 2010

QUICKSTEP: SETTING UP YOUR OWN TWITTER ACCOUNT

1. Go to <http://twitter.com>.
2. Create an account if you don't already have one by clicking on **Sign up now**. If you have one, log in by clicking on **Sign in**!



You may use the TWITTER account that you already have, but if you tweet a great deal, it is preferred that you create a new account for ease in marking.

3. Complete the information required on the page.

Join the Conversation
 Already use Twitter on your phone? Finish signup now.

Full name
Your full name will appear on your public profile

Username
Your public profile: [http://twitter.com/ USERNAME](http://twitter.com/USERNAME)

Password
Note: Email will not be publicly displayed

Email

Let others find me by my email address

Terms of Service Terms of Service
These Terms of Service ("Terms") govern your websites (the "Services"), and any information, text, graphics, or other materials uploaded,

By clicking on "Create my account" below, you are agreeing to the Terms of Service above and the Privacy Policy.

I want the inside scoop—please send me email updates!

Callout boxes:
 - Select a professional username, such as mrsmith or msjones, or use your first initial and last name, like sjones! This is how you will appear to the rest of the world, so your username is important!
 - Write down this password and your new Twitter username in a place where you can find it again – try using your **VERY Important Info** sheet!!
 - Click **Create my Account**

Step 4. Type in the letters as you see them in the security box and click **FINISH**.

Are you human?

Before we create your account, we need to make sure you're not a computer.

1-15 recopich

Type the words above

Callout box: You can request new words IF you cannot figure out what to type!

reCAPTCHA options:
 Can't read this?
 - [Get two new words](#)
 - [Hear a set of words](#)
 Powered by reCAPTCHA.
[Help](#)

Step 5: SKIP the Browse Interests by scrolling to the bottom of the Browse Interest pages and selecting:

Next step: friends >>

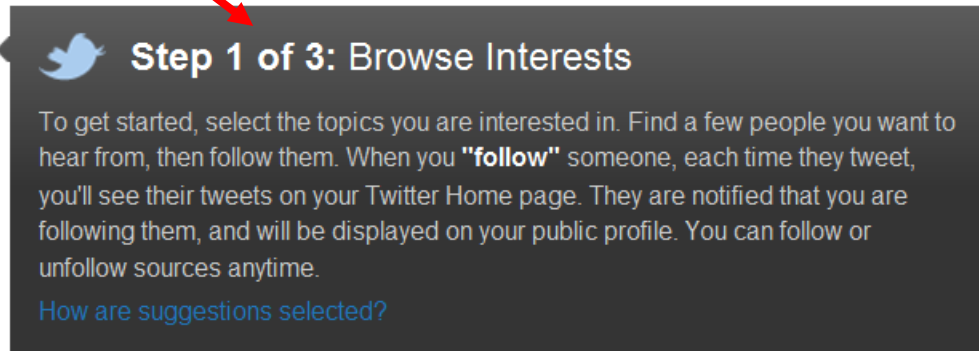
Next step: search >>

Then at the bottom of the next page, select:

Next step: You're done! »

Then at the bottom of the next page, select:

Twitter is providing you with opportunities to follow many people by giving you these options: Suggestions, Friends, and Search. You can always go back and do this later!!

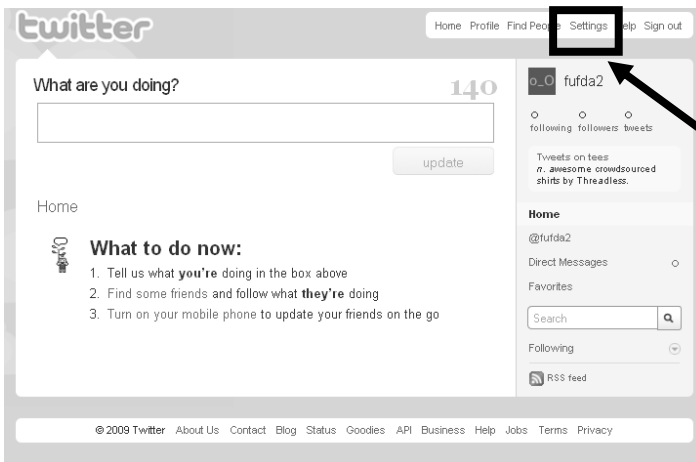


Step 1 of 3: Browse Interests

To get started, select the topics you are interested in. Find a few people you want to hear from, then follow them. When you **"follow"** someone, each time they tweet, you'll see their tweets on your Twitter Home page. They are notified that you are following them, and will be displayed on your public profile. You can follow or unfollow sources anytime.

[How are suggestions selected?](#)

Step 6: We will set up Twitter for our use in this class now. Click on the **SETTINGS** link.



Home Profile Find People Settings Help Sign out

What are you doing? 140

update

Home

What to do now:

1. Tell us what **you're** doing in the box above
2. Find some friends and follow what **they're** doing
3. Turn on your mobile phone to update your friends on the go

Home

@fufda2

Direct Messages

Favorites

Search

Following

RSS feed

© 2009 Twitter About Us Contact Blog Status Goodies API Business Help Jobs Terms Privacy

Click on the **SETTINGS** link and make your Twitter site reflect your own preferences!

Step 7: The most important setting to change is under the **ACCOUNT** tab. This will automatically pop up when you clicked on the **SETTING** button.

TWO important steps here:

- 1) Change the **Time Zone**
- 2) Do not check the box to Protect Tweets. You must leave your account unprotected during this class.

When the class is completed, you may want to come back to this page and **PROTECT MY TWEETS!**

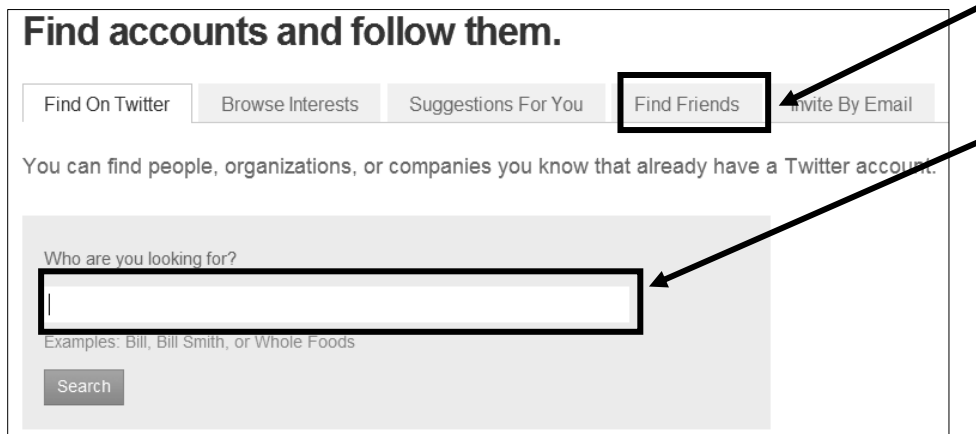
The screenshot shows the Twitter 'Account' settings page. The 'Account' tab is selected. The page includes fields for Name (candace figg), Username (fufda2), Email, Language (English), and Time Zone (GMT-05:00) Quito. There are checkboxes for 'Let others find me by my email address' (checked), 'Add a location to your tweets', and 'Protect my tweets' (unchecked). A 'Save' button is at the bottom right. Arrows from the text box point to the Time Zone dropdown and the 'Protect my tweets' checkbox.

Click **SAVE** and you are ready to begin Tweeting! Click **HOME** to return to the page to add Tweets! Explore to find out how you would 'follow' others and how you can invite them to 'follow' you! If you are unsure, turn the page 😊!

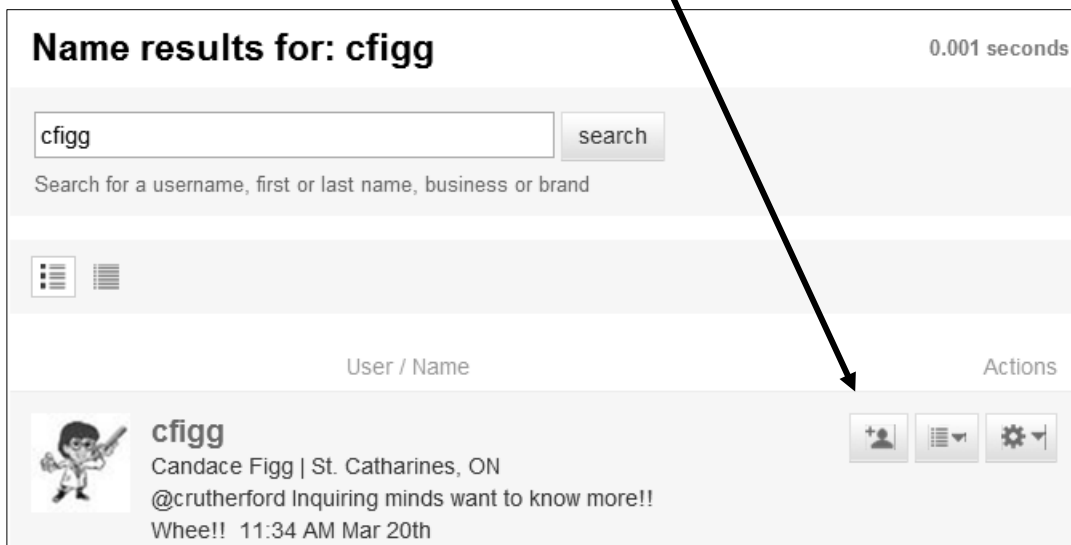
Step 8: Following others!

When you add a person to your Following list, their tweets will show up on your Home page so that you can read them. Try this by adding your instructor to your follow list. To add a person, do the following:

- 1) Click on **Find Account** link
- 2) Type **cfigg** into the box and click **SEARCH**.



- 4) When the name comes up, just click the Follow button. You can always remove my name from your 'follow' list!



Step 9: Inviting others to follow you! When others are following you, they can see your tweets. At this point, anyone can see your tweets, but you may want to invite specific people to follow you!

- 1) Click on **Find Accounts** link
- 2) Click on the **Invite by email** link.
- 3) Type their email address in the box and click the **INVITE** button.

That's it! Twitter will send them an email inviting them to follow you! They have the option to accept the invitation or not. Make yourself at home with the tool. Explore the tutorials under the **Help** link and enjoy how easy this Web 2.0 tool is to use for communication purposes!